



  
**INDIGENA**  
FINE FOLK ART

Authentic artisan products  
from Latin-America  
pottery, tableware, accessories & more.

**Catalogue Others**  
2025

# Contents

## Sisal & Iraca

Basket Collection	<b>08</b>
Amazonas	10
Iraca	15

Placemat Collection	<b>20</b>
Iraca	21
Sisal	25
Amazonas	29

Carpet Collection	<b>31</b>
Sisal	32
Fibras	34
Vintage wool	36

## Seat Collection

## Tejidos **38**

Cushion Collection	<b>40</b>
Peru	41
Mexico	47

## Accessories Collection **40**

Maniques	50
Mochilas	52
Clutch	55
Belt	57
Iraca napkin ring	

## Vidrio

### Glass Collection

Jar	
Glass without foot	
Glass with foot	
Glass bowl	

## Christmas Collection

### Ornaments

Tin	
Iraca	

# Introduction



## Authentic artisanal products from Latin-America

---

Indigena advocates for qualitative artisanal products with a guarantee to be locally produced and fairly remunerated. We want you to learn about the rich culture of the native people in a way where respect and transparency are central. Every product has been carefully handpicked from the workplace of Indigenous communities.

Indigena Collection  
Sisal & Iraca

## Ancestral know-how

---

Made by the Indigenous Nukak, semi-nomadic people living in the Upper Amazon region, the creation-process requires ancestral know-how that has been passed on from generation to generation. The production of these objects require many hours of precision and manual labour in order to create unique and timeless pieces.







## Take what you need

---

The Nukak-people are hunter-gatherers that only take what they need from nature. These semi-nomadic people use these baskets to transport their personal belongings during their travels. Through these beautiful objects, we hope to take you on their journey.

## 100% natural

---

For the Indigenous people, nature is a source of priceless treasures. This is where they go to forage chiquechique, iraca, sisal, caña flecha... These materials are used to create baskets, tableware and so much more.





## use & maintenance

---

Sisal & Iraca are natural materials and can be cleaned using water. More so, it's actually beneficial for the maintenance of these objects to be regularly washed with water.





## Baskets Collection

- I. Amazonas
- II. Iraca





# Baskets

## **I. Amazonas**

### III. Iraca

happier together

---

Coming in different forms & sizes,  
this is not a case of 'less is more'.

Please contact us to confirm the availability of our products.

## basket maku



## description

- basket 4 (small)
- basket 6 (medium)
- basket 8 (large)
- basket 9 (extra large)

## reference

- INDSIB-03-04
- INDSIB-03-06
- INDSIB-03-08
- INDSIB-03-09

## dimensions

- ø 34/38 x 26 cm
- ø 40/48 x 32 cm
- ø 54/58 x 39 cm
- ø 59/63 x 42 cm

## made-to-order sizes

In case you wish to purchase the maku baskets in dimensions other than those represented in this offer, please contact us to discuss options.

The Maku Baskets are Indigena's *signature* collection. Handmade with Yaré rattan in the Colombia's Amazon, these baskets are incredibly robust and will last you a lifetime. Varying from the smallest to the largest sizes, they will store all your homewares beautifully.

## basket nukak



descriptions	reference	dimensions
basket XS	INDSIB-02-01	ø 15/20 - 10/12 cm
basket S	INDSIB-02-02	ø 21/26 - 10/15 cm
basket M	INDSIB-02-03	ø 27/32 - 10/15 cm
basket L	INDSIB-02-04	ø 33/37 - 10/15 cm
basket XL	INDSIB-02-05	ø 38/42 - 10/15 cm
basket XXL	INDSIB-02-06	ø 42/55 - 15/20 cm

## basket chique chique



descriptions	reference	dimensions
small round	INDSIB-04-24	ø 16 - 5 cm
rectangular	INDSIB-04-20	30 x 20 x 4 cm





Indigena - Catalogue 2025 - Others



# Baskets

I. Amazonas

**II. Iraca**

we make your selection

---

Every basket is one-of-a-kind, there are no two the same. As you place your order, please note that we will make a color selection for you. If you have a preference in color & style, please let us know and we will align our selection to your taste.



## paper basket



### reference

INDSIB-06-01

### dimensions

ø 28-22 x 24 cm

*\* we can make your color selection*



**small cup**



**reference**

INDSIB-06-02

**dimensions**

ø 12 - 6 cm

*\* we can make your color selection*

**medium cup**



**reference**

INDSIB-06-03

**dimensions**

ø 17 x 9 cm

*\* we can make your color selection*





Every object is  
handmade, and  
therefore one  
of a kind.



## Placemat Collection

- I. Iraca
- II. Sisal
- III. Amazonas



# Placemats

**I. Iraca**

II. Sisal

III. Amazonas



---

Rustic handmade placemat,  
perfect for every setting.

Please contact us to confirm the availability of our products.



**placemat iraca square**



-01

descriptions	reference	dimensions
natural	INDSIP-04-01	L40 D30
multicolor	INDSIP-04-03	L40 D30



-03

These placemats are sold in sets of 6,  
each in similar colors.









**iraca round**



**description**

multicolor

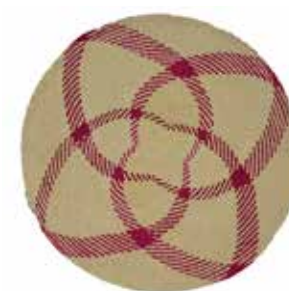
**reference**

INDSIP-01-02

**dimensions**

ø 35-38 cm

These placemats are sold in sets of 6,  
each in similar colors.



# Placemats

I. Iraca

**II. Sisal**

III. Amazonas

---

Rustic handmade placemat,  
perfect for every setting.

Please contact us to confirm the availability of our products.



**sisal square placemat set (6pcs)**



-07



-08

**description**

**reference**

**dimensions**

black with natural line  
natural with black line

INDSIP-02-07  
INDSIP-02-08

48 x 35 cm  
48 x 35 cm

**sisal square rustic placemat**



-01

<b>description</b>	<b>reference</b>	<b>dimensions</b>
natural	INDSIP-03-01	45 x 32 cm
maroon	INDSIP-03-03	45 x 32 cm
burgundy	INDSIP-03-06	45 x 32 cm
light blue	INDSIP-03-07	45 x 32 cm
black	INDSIP-03-09	45 x 32 cm
black & white	INDSIP-03-10	45 x 32 cm



-03



-06



-07



-09



-10





INDSIP-03-01



# Placemats

I. Iraca

II. Sisal

**III. Amazonas**

---

Rustic handmade placemat,  
perfect for every setting.

Please contact us to confirm the availability of our products.

### chiquichiqui placemat



#### **description**

natural fiber

#### **reference**

INDSIP-05-01

#### **dimensions**

ø 35-38 cm



## Carpet Collection

- I. Sisal
- II. Fibras
- III. Peru vintage



# Carpets

## I. Sisal

### II. Fibras

### III. Peru vintage



---

Please contact us to confirm the availability of our products.

### carpet sisal small



-01

#### description

natural (#46)  
dark brown (#9)  
black (#10)  
dark rust (#19)  
light brown (#7)  
dark grey (#45)  
ocre (#25)  
chiné grey (#5+6)  
chiné dark

#### reference

INDSIC-01-01  
INDSIC-01-02  
INDSIC-01-03  
INDSIC-01-05  
INDSIC-01-07  
INDSIC-01-08  
INDSIC-01-10  
INDSIC-01-12  
INDSIC-01-14

#### dimensions

L50 D70 cm  
L50 D70 cm  
L50 D70 cm  
L50 D70 cm  
L50 D70 cm  
L50 D70 cm  
L50 D70 cm  
L50 D70 cm  
L50 D70 cm

### carpet sisal large



-03

#### description

natural (#46)  
black (#10)  
chiné grey (#5+6)  
chiné dark

#### reference

INDSIC-03-01  
INDSIC-03-03  
INDSIC-03-12  
INDSIC-03-14

#### dimensions

L60 D90 cm  
L60 D90 cm  
L60 D90 cm  
L60 D90 cm

\* **contact us for more information** regarding sisal carpets **made to measure**





# Carpets

I. Sisal

**II. Fibras**

III. Peru vintage



---

Please contact us to confirm the availability of our products.

## carpet tradicional



## reference

## dimensions

INDSIC-02-02/1 L200 D145

INDSIC-02-02/2 L175 D130

**Every carpet of this collection is a unique piece.  
Please contact us to make your selection.**

# Carpets

I. Sisal

II. Fibras

**III. Vintage wool**

---

Please contact us to confirm the availability of our products.





**vintage wool carpet**



**reference**

INDTE-41-01

**dimensions**

+/- 140cm x 160cm

**These carpets are all unique pieces.  
Different sizes & colors available, please contact us for more information.**



## Seat collection



---

Please contact us to confirm the availability of our products.

## Sisal seat



## description

brown  
ocre  
green  
white egg  
grey  
pink  
burgundy

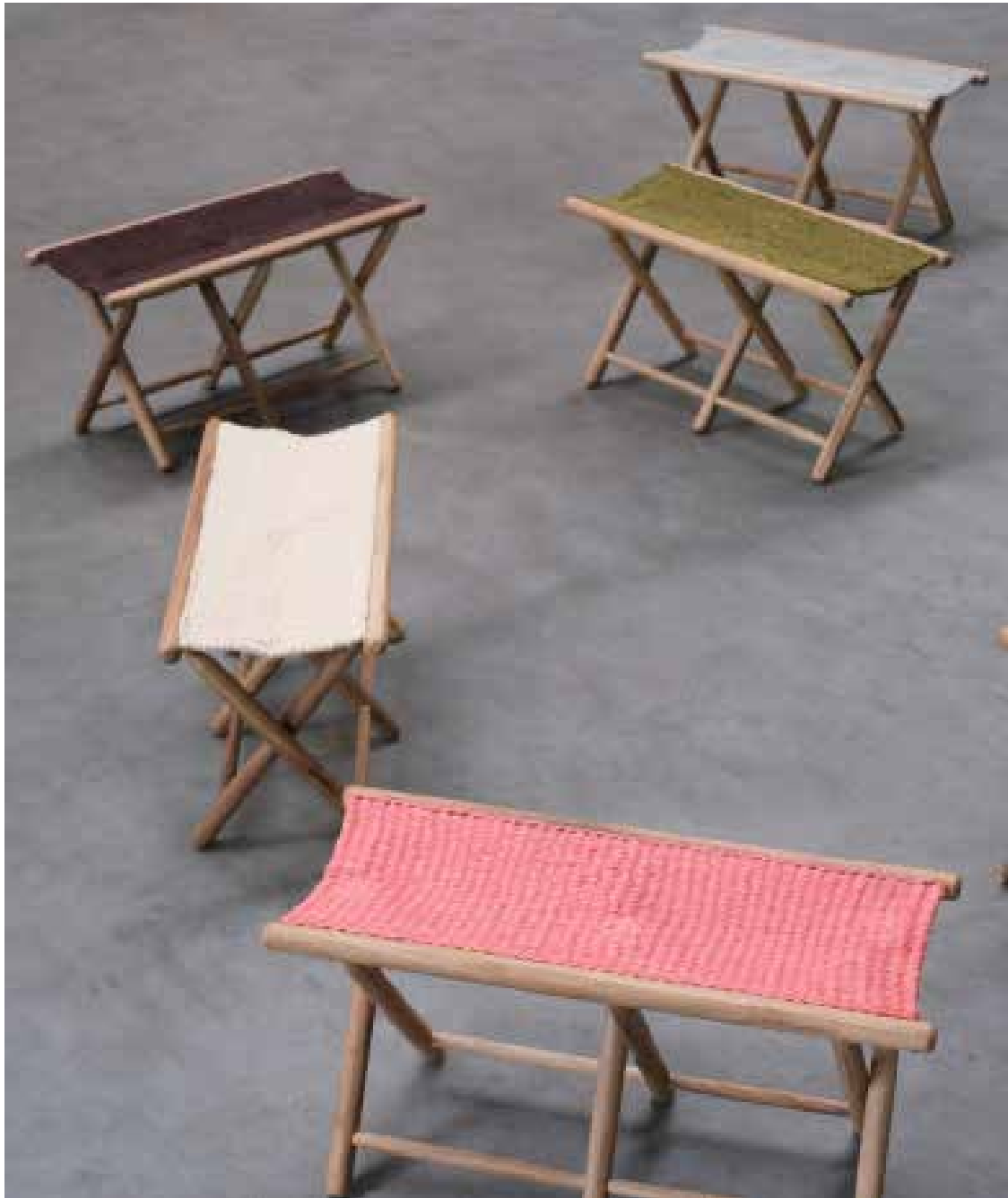
## reference

INDTE-11-01/1  
INDTE-11-01/2  
INDTE-11-01/3  
INDTE-11-01/4  
INDTE-11-01/5  
INDTE-11-01/6  
INDTE-11-01/7

## dimensions

88 x 38 cm  
88 x 38 cm  
88 x 38 cm  
88 x 38 cm  
88 x 38 cm  
88 x 38 cm  
88 x 38 cm

\* New colors coming soon







Indigena Collection  
Tejidos

Our engagement

---

These products are often the fruit of a few women who decided to create a business together. The little free time they have is spent on crafting their art. Thanks to this cooperative of female artisans, the sale of their products improves their lives. Each piece is entirely unique according to the skills of the artisans.







## Heritage & quality

---

The true pleasure of finding our products lays in the unique meetings with the artisans and discovering their stories. For example, the artisans living in the Andes celebrate their heritage by recycling the alpaca bags used to transport the harvest into one-of-a-kind pillow cases.



## Cushions Collection

- I. Peru
- II. Mexico



# Cushions

## I. Peru

## II. Mexico

---

Please contact us to confirm the availability of our products.



## Vintage Alpaca Cushion



<b>description</b>	<b>reference</b>	<b>dimensions</b>
natural colors S	INDTE-20-01/..	+/- 60 x 40 cm
natural colors M	INDTE-20-02/..	+/- 65 x 45 cm
natural colors L	INDTE-20-03/..	+/- 70 x 50 cm



Vintage Alpaca Pillow (square)  
La Chamba CH126.00 / CH126.02 / CH126.04

## Flower embroidered cushions



### **description**

Different colors  
available

### **reference**

INDTE-30-01/...  
INDTE-30-02/...

### **dimensions**

50 x 50 cm  
45 x 45 cm

Handmade in Peru





INDTE-30



## Vintage wool



Every piece is unique.

### description

Different colors  
available

### reference

INDTE-40-01/...  
INDTE-40-02/...  
INDTE-40-03/...

### dimensions

45 x 45 cm  
50 x 50 cm  
60 x 40cm



# Cushions

I. Peru

**II. Mexico**

---

Please contact us to confirm the availability of our products.

## Handwoven in the Chiapas



Nichim  
INDTE-10-01  
INDTE-10-05

### description

Pillow Chiapas

### reference

INDTE-10-01/04  
INDTE-10-05/08

### dimensions

large	L70 W50 cm
small	L50 W40 cm



Mochbil  
INDTE-10-04  
INDTE-10-08



Zukum  
INDTE-10-02  
INDTE-10-06



Santo  
INDTE-10-03  
INDTE-10-07

**We provide synthetic cushion inserts.  
More information on our website [indigena.be](http://indigena.be)**





## Vidrio Collection

- I. Jar
- II. Glass without foot
- III. Glass with foot
- IV. Glass bowl

# Vidrio Collection

## **I. Jar**

II. Glass without foot

III. Glass with foot

IV. Glass bowl

---

Please contact us to confirm the availability of our products.

### Blown glass jar (1.2L)



#### description

Blue line  
Amber line  
Green line

#### reference

INDVI-01-01  
INDVI-01-02  
INDVI-01-03

#### dimensions

Ø 14 x 17 x 16 cm  
Ø 14 x 17 x 16 cm  
Ø 14 x 17 x 16 cm

### Blown glass jar (0.5L)



#### description

Blue line  
Amber line

#### reference

INDVI-05-01  
INDVI-05-02

#### dimensions

Ø 9 x 13 x 14 cm  
Ø 9 x 13 x 14 cm



INDVI-01-02 JAR



# Vidrio Collection

I. Jar

**II. Glass without foot**

III. Glass with foot

IV. Glass bowl

---

Please contact us to confirm the availability of our products.



INDVI-01-02 JAR  
INDVI-02-02 GLASS LARGE  
INDVI-03-02 GLASS MINI

### Blown glass Large (2.5dl)



#### description

Blue line  
Amber line  
Green line

#### reference

INDVI-02-01  
INDVI-02-02  
INDVI-02-03

#### dimensions

Ø 8,5 x 9,5 cm  
Ø 8,5 x 9,5 cm  
Ø 8,5 x 9,5 cm

### Blown glass Agua (2.5dl)



#### description

Blue line  
Amber line

#### reference

INDVI-04-01  
INDVI-04-02

#### dimensions

Ø 7,5 x 15 cm  
Ø 7,5 x 15 cm

### Blown glass Mini (1.25dl)



#### description

Blue line  
Amber line

#### reference

INDVI-03-01  
INDVI-03-02

#### dimensions

Ø 6,5 x 9 cm  
Ø 6,5 x 9 cm

### Blown glass Extra Mini (0,65dl)



#### description

Amber line

#### reference

INDVI-06-02

#### dimensions

Ø 5,5 x 6 cm



## Vidrio Collection

- I. Jar
- II. Glass without foot
- III. Glass with foot**
- IV. Glass bowl

---

Please contact us to confirm the availability of our products.



### Blown glass with foot (2.5dl)



#### description

Blue line  
Amber line  
Green line

#### reference

INDVI-07-01  
INDVI-07-02  
INDVI-07-03

#### dimensions

Ø 9 x 14 cm  
Ø 9 x 14 cm  
Ø 9 x 14 cm

### Blown glass with foot (1.5dl)



#### description

Blue line  
Amber line  
Green line

#### reference

INDVI-08-01  
INDVI-08-02  
INDVI-08-03

#### dimensions

Ø 7,5 x 11,5 cm  
Ø 7,5 x 11,5 cm  
Ø 7,5 x 11,5 cm

## Vidrio Collection

- I. Jar
- II. Glass without foot
- III. Glass with foot
- IV. Glass bowl**

---

Please contact us to confirm the availability of our products.



## Blown glass bowl



### description

Blue line  
Amber line  
Green line

### reference

INDVI-09-01  
INDVI-09-02  
INDVI-09-03

### dimensions

Ø 16 x 5 cm  
Ø 16 x 5 cm  
Ø 16 x 5 cm





## Accessories Collection

- I. Maniques
- II. Mochila
- III. Clutch
- IV. Belt
- V. Iraca napkin ring

## Accesories

### I. Maniques

II. Mochila

III. Clutch

IV. Belt

V. Iraca napkin ring



---

Please contact us to confirm the availability of our products.

**maniques**

**description**

**reference**

**dimensions**

woolen potholder  
(crochet)

INDTE-50-03

20 x 18 cm



## Accesories

I. Maniques

**II. Mochila**

III. Clutch

IV. Belt

V. Iraca napkin ring

---

Every piece is unique & handmade.



## Mochillon Wayuu



### description

large bag (cotton)

### reference

INDTE-50-05/...



**Different designs in black & white.  
Every piece is unique.**



Mochillon Wayuu INDTE-35

## Accessories Collection

- I. Maniques
- II. Mochila
- III. Clutch**
- IV. Belt
- V. Iraca napkin ring

---

Every piece is unique & handmade.





## Clutch



### description

Embroidered  
woolen clutch

### reference

INDTE-50-01

### dimensions

23 x 13 cm





# Accesorios

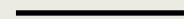
I. Maniques

II. Mochila

III. Clutch

**IV. Belt**

V. Iraca napkin ring



Every piece is unique & handmade.

**Belt**

**description**

**reference**

**dimensions**

Embroidered  
woolen belt

INDTE-50-02/...

110 -120 x 5 cm



## Accesories

- I. Maniques
- II. Mochila
- III. Clutch
- IV. Belt
- V. Iraca napkin ring**

---

Every piece is unique & handmade.



## Iraca napkin ring (set of 6)



### description

cherry  
apple  
pear  
pineapple  
orange  
lemon  
octopus  
fish  
lobster  
starfish  
carrot  
beetroot  
cauliflower  
leek

### reference

INDSIA-01-01  
INDSIA-01-02  
INDSIA-01-03  
INDSIA-01-04  
INDSIA-01-05  
INDSIA-01-06  
INDSIA-01-07  
INDSIA-01-08  
INDSIA-01-09  
INDSIA-01-10  
INDSIA-01-11  
INDSIA-01-12  
INDSIA-01-13  
INDSIA-01-14



## Conditions of sale

**GENERAL :** Unless the law prescribes otherwise, these general conditions apply to all activities of INDIGENA SRL. These general conditions, as well as all special conditions of INDIGENA SRL, are deemed to be accepted by its buyers and suppliers, even if they contradict their own general or special conditions. Any deviation from these conditions must be recorded in writing and communicated by a person authorized to bind INDIGENA SRL.

**QUOTATION :** INDIGENA SRL's offers are without obligation. The orders are only final after they have been confirmed in writing and signed by a person authorized to bind INDIGENA SRL. INDIGENA SRL is not liable for non-execution due to force majeure, strikes, lock-outs, etc.

**DELIVERY :** Delivery times are given as an indication. The goods travel at the risk of the buyer, whereby the transfer of risk takes place as soon as the goods leave the warehouses of INDIGENA SRL. INDIGENA SRL reserves the right to invoice the goods as delivered, even if it concerns parts. For wholesale customers, the transport costs are mentioned on the order form. Pallets that are not returned will be invoiced at €15 excl. Upon receipt of your deliveries, please sign the delivery note with your precise comments (the statement "subject to inspection" may be used, but with an immediate e-mail with photos and references). We will replace a damaged product, or an incorrect order, provided we are informed in writing within 24 hours with photos and references. Please send your emails to [sophie@indigena.be](mailto:sophie@indigena.be). If you do not do this, the carrier will refuse to intervene and we will unfortunately not be able to refund or replace the product.

**PRODUCTS :** All products sold by INDIGENA SRL are handmade from natural raw materials. Slight variations in colour may occur and/or small variations in size are possible. These are part of the authenticity of the product and confirm the individuality and beauty of the product.

Indigena products should be used with care. (For example for the Chamba: do not cut with a sharp knife, do not use in the dishwasher, cooking at very high temperatures can cause the red colour used for smoking to appear, etc.). Usage advice can be found on the website and on the recipe cards that come with the products. Indigena cannot be held responsible in any way for incorrect use of the products. However, in the event of a defect, INDIGENA SRL's liability is limited to the replacement of the defective part, without INDIGENA SRL being held liable for any reimbursement, indemnification or compensation of any kind and for any reason whatsoever. In case of a defect, the Buyer should report the defect by e-mail to [sophie@indigena.be](mailto:sophie@indigena.be) with a photo and reference. INDIGENA SRL will ensure the proper follow-up of the replacement, but not the transport. Indigena undertakes to deliver the defective product with the next order.

**PAYMENTS :** Unless agreed otherwise in writing, all invoices of INDIGENA SRL are payable in cash. In the absence of payment of an invoice on the due date, all amounts due become immediately payable, regardless of the previously granted payment facilities. In the event of non-payment of a partial delivery on the due date, INDIGENA SRL reserves the right to cancel the balance of the order.

**DELAY :** In the event of non-payment of an invoice on its due date and without prior notice of default the debtor acknowledges that he shall owe conventional damages of 2% and interest on arrears of 10% per annum. The courts of Brussels have exclusive jurisdiction. The purchaser acknowledges that the goods remain the property of INDIGENA SRL until full payment of the invoice and its attachments in the event of non-payment at the due date.

**DISPUTES :** In the event of a dispute, with the exception of the recovery of unpaid invoices, the parties undertake to seek prior mediation by appointing an approved mediator and to participate in two sessions of at least two hours in order to try to reach an amicable settlement.

Indigena Bank Account CBC - IBAN: BE47 7320 6290 2680 - BIC GREGBEBB



“Through these products you will discover the artisans we work with. Every moment they are not occupied with their daily tasks, the women of the village spend on the creation of these objects.

In the shadow of a tree or late in the evening while the children are sleeping, you will find these women working on their creations. The sale of their products allows them to support their family.”









Join our journey.

**INDIGENA - fine folk art**

Avenue de l'orée 21/3  
1000 Bruxelles,  
Belgium

**[www.indigena.be](http://www.indigena.be)**

**[@indigena\\_fine\\_folk\\_art](https://www.instagram.com/indigena_fine_folk_art)**

tél : +32 (0)479 282 112

[sophie@indigena.be](mailto:sophie@indigena.be)

BE0778.939.890